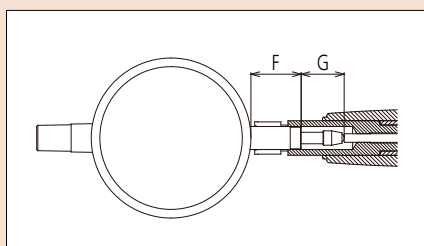


Recommended Indicators Accessories for Bore Gages

Note: Among indicators other than those recommended, the following types of indicator cannot be used.

- Indicators with a total length of F and G of less than 31.8 mm
- Indicators with a measuring range of more than 12.7 mm (ISO/JIS Type)/0.9 in (ASME/ANSI Type)
- Dust-proof and water-proof indicators with a spindle covered with rubber

Please contact us if you have any questions about products.



- These are the recommended indicators for bore gages. Select the best one for your application.

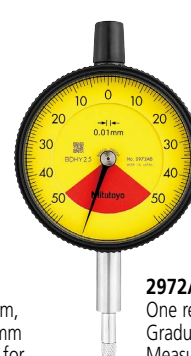
RECOMMENDED INDICATORS



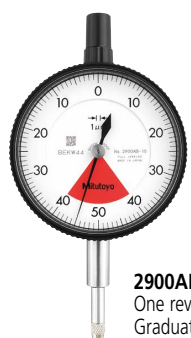
2046AB
Graduation 0.01 mm,
Measuring range 10 mm
Refer to page 07-26 for details.



2109AB-10
Graduation 0.001 mm,
Measuring range 1 mm
Refer to page 07-28 for details.



2972AB
One revolution type,
Graduation 0.01 mm,
Measuring range 1 mm
Refer to page 07-40 for details.



2900AB-10
One revolution type,
Graduation 0.001 mm,
Measuring range 0.08 mm
Refer to page 07-34 for details.



543-310B-10
ABSOLUTE Digimatic
Indicator
Resolution 0.001 mm
Refer to page 07-15 for details.

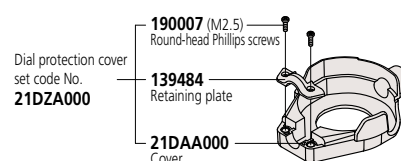


543-700B
Resolution 0.0005 mm
Refer to page 07-5 for details.

Note: Settings should be modified prior to use. Refer to the user's manual for details.

DIAL PROTECTION COVER

- The cover protects the indicator from unexpected impact while handling the bore gage.
- Can also be used for **543-310B-10**, an ABS Digimatic indicator for bore gages.
Note: This protect cover is intended to be attached to a bore gage and cannot be used for a dial indicator or Digimatic indicator alone.



Unit: mm

